

# ALASKA HELI-SKI: GIRDWOOD

## ATHLETE: ZACH CRIST

venue..... Chugach Mountain Range  
program base..... Girdwood, Alaska  
operator..... Chugach Powder Guides

**CHUGACH**  
POWDER GUIDES



### THE INSIDE LINE

Chugach Powder Guides' headquarters are located near the base of Alyeska Resort in the small town of Girdwood, Alaska. Nestled in a small valley in the Chugach Mountains the surrounding area offers access to the some of the best heli skiing in the world. Short helicopter flights place skiers on top of big Alaska faces with views of Turnagain Arm in one direction and Prince William Sound in the other. When you're not in the helicopter, access to Alyeska Resort and some of the finest inbound skiing north of Jackson Hole is just a tram ride away. If all of this is not enough Chugach Powder Guides private cat skiing area is up valley from the Hotel Alyeska. All in all a trip to Girdwood is a must do.

### ZACH CRIST

A member of the US Ski Team from 1991-1998, Zach competed on the World Cup for 7 seasons. In 1999, he shifted his focus to the emerging event of ski cross. After 9 X Games appearances Zach tallied gold, silver and bronze medals becoming one of the sports pioneers alongside brother Reggie. Beyond competitive pursuits, Zach and Reggie have been exploring the world as backcountry skiers and guides. Their adventures have appeared in numerous ski films and TV shows featuring first descents in the Himalayas, New Zealand, Greenland, Alaska and at home in Idaho. Zach currently guides for Sun Valley Heli-Ski and Sawtooth Mountain Guides.

### 2012 PACKAGE DATES & PRICES

5 Day, 6 Night: Sun., Mar. 18 - Sat., Mar. 24    Single Occupancy - \$6,550    Double Occupancy - \$5,600  
7 Day, 8 Night: Sat., Mar. 17 - Sun., Mar. 25    Single Occupancy - \$8,950    Double Occupancy - \$7,825

## HELI PACKAGES

Our 5 & 7-day packages include:

- Premier lodging at The Hotel Alyeska
- Guaranteed vertical feet of helicopter skiing and boarding
- Round-trip transportation on a scheduled shuttle from the Anchorage International Airport
- Snowcat back-up for no-fly days (optional)
- Use of a Mammut PULSE Barryvox avalanche transceiver
- Lunch on fly days

## WEATHER AND CONDITIONS

The Western Chugach Mountain Range benefits from the combined influences of warm Pacific Ocean air mixing with colder arctic air that blows in from the Alaska interior. The resulting high-quality powder snow is why this coastal mountain range is famous. Our operation areas average 600 inches (1,524 cm) of snowfall each winter. Average temperatures from February to mid-March are 20°F (-7°C). In March, there is a gain of nearly six minutes of daylight per day, and as the days grow longer, afternoon highs are typically 20°F to 30°F (-7°C to -1°C). Dry powder conditions can be found on all but the southern-facing slopes, where excellent corn snow offers yet another style of skiing.

## TERRAIN

Alaska's Western Chugach Mountains wrap around some of the best helicopter skiing and boarding terrain in the world. The 3,000 to 4,000-foot vertical runs are found on hundreds of peaks, providing guests with more powder than they can ride in one trip. Guests can ski directly from our Girdwood base and from there explore the northern zones, or base their adventure from one of our remote heli ports in the southern areas. Most guests ski both during their week long adventure. Runs like "Lost Shots," "Dendrites" and "Wall Street" dish out quintessential Alaska heli-skiing. Conditions permitting, aggressive mountain lines like "Comet Couloir," "Stolen Face," and "Sky Walker" wait to be skied. It's about being challenged and safe. Stability and conditions take priority when selecting runs and planning the day.

## GIRDWOOD AND ACCOMMODATIONS

Girdwood is 40 miles (64 km) south of Anchorage. The Seward Highway parallels scenic Turnagain Arm and is flanked by the Chugach Mountains. What started as a gold mining prospect in 1895, today is a quaint ski village with a high-energy community of 2,000, a luxury hotel and ski resort, award-winning restaurants, ski shops, and watering holes where locals gather to compare adventures. Daily flights from Seattle, Salt Lake City, Minneapolis and Denver offer direct connections to Alaska.

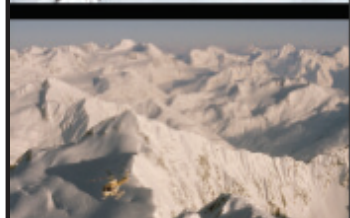
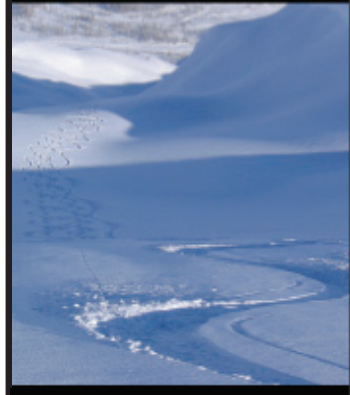
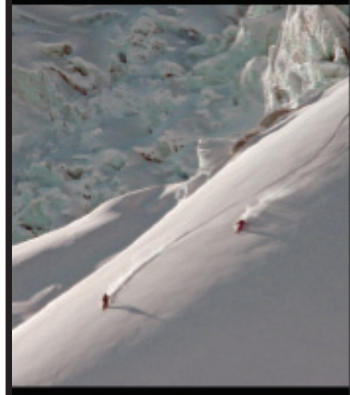
We are proud to be affiliated with Alyeska Resort and The Hotel Alyeska. Located adjacent to the ski slopes, the hotel serves as home base for our clients. Each guest stays in a deluxe room with beautiful views of the Chugach Range. Amenities include room service, in-room coffee makers, safes, refrigerators, and robes and slippers. A state-of-the-art fitness center, indoor pool, sauna and whirlpool are part of the experience, and four on-site restaurants are known for creative dishes prepared with fresh Alaska ingredients and breathtaking views. It is our pleasure to treat our package guests to a deluxe party and dinner with our guides at the Seven Glaciers restaurant located at the top of Mt. Alyeska.

## SNOWCAT BACKUP

If we cannot fly due to weather, a guaranteed seat on the snowcat can be purchased for one-week packages. Snowcat skiing and boarding is our all-weather alternative to the helicopter. We operate an exclusive 1,500-acre (607 hectare) snowcat area located in the upper Girdwood Valley adjacent to Alyeska Resort. Exciting mountain terrain, sweeping views, open powder cruising in alpine bowls, steep pitches and the finest tree skiing and boarding in Alaska are part of this experience.

## SKIING GUARANTEE

Helicopter operations, our exclusive snowcat area, and Alyeska Resort lift services assure you will not miss any skiing and boarding during your stay with us.



CHUGACH  
POWDER GUIDES